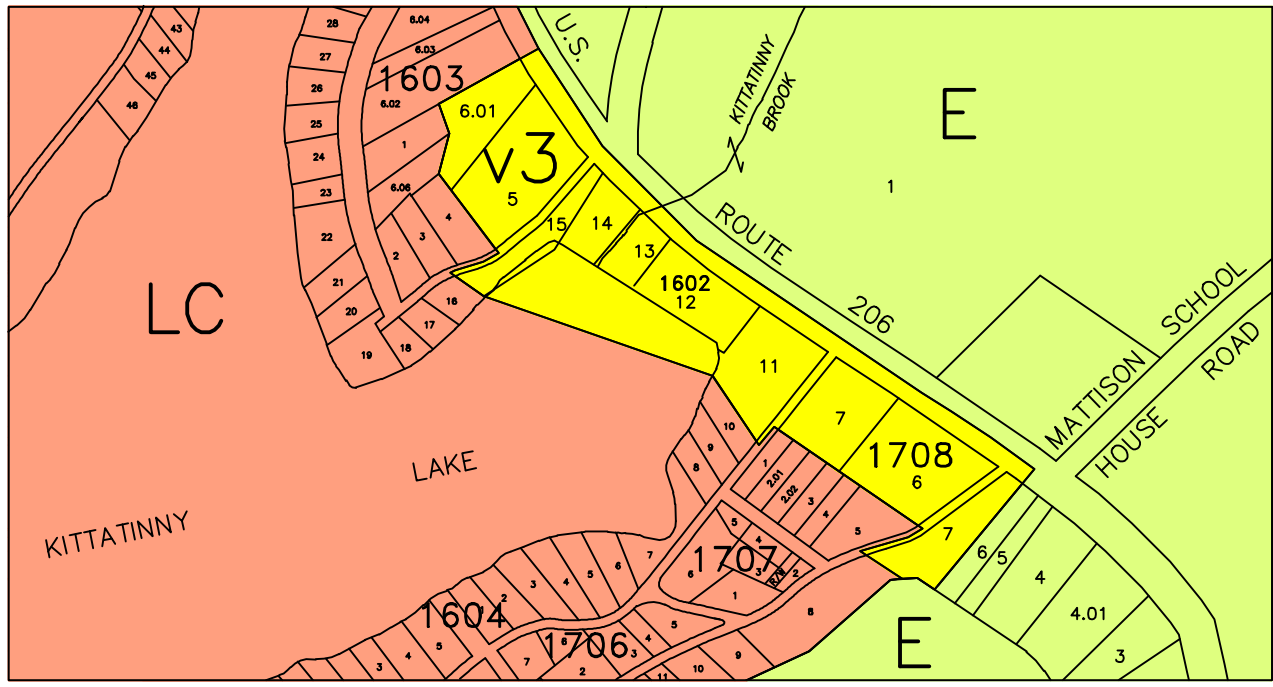


DETAIL OF VILLAGE ZONE V2

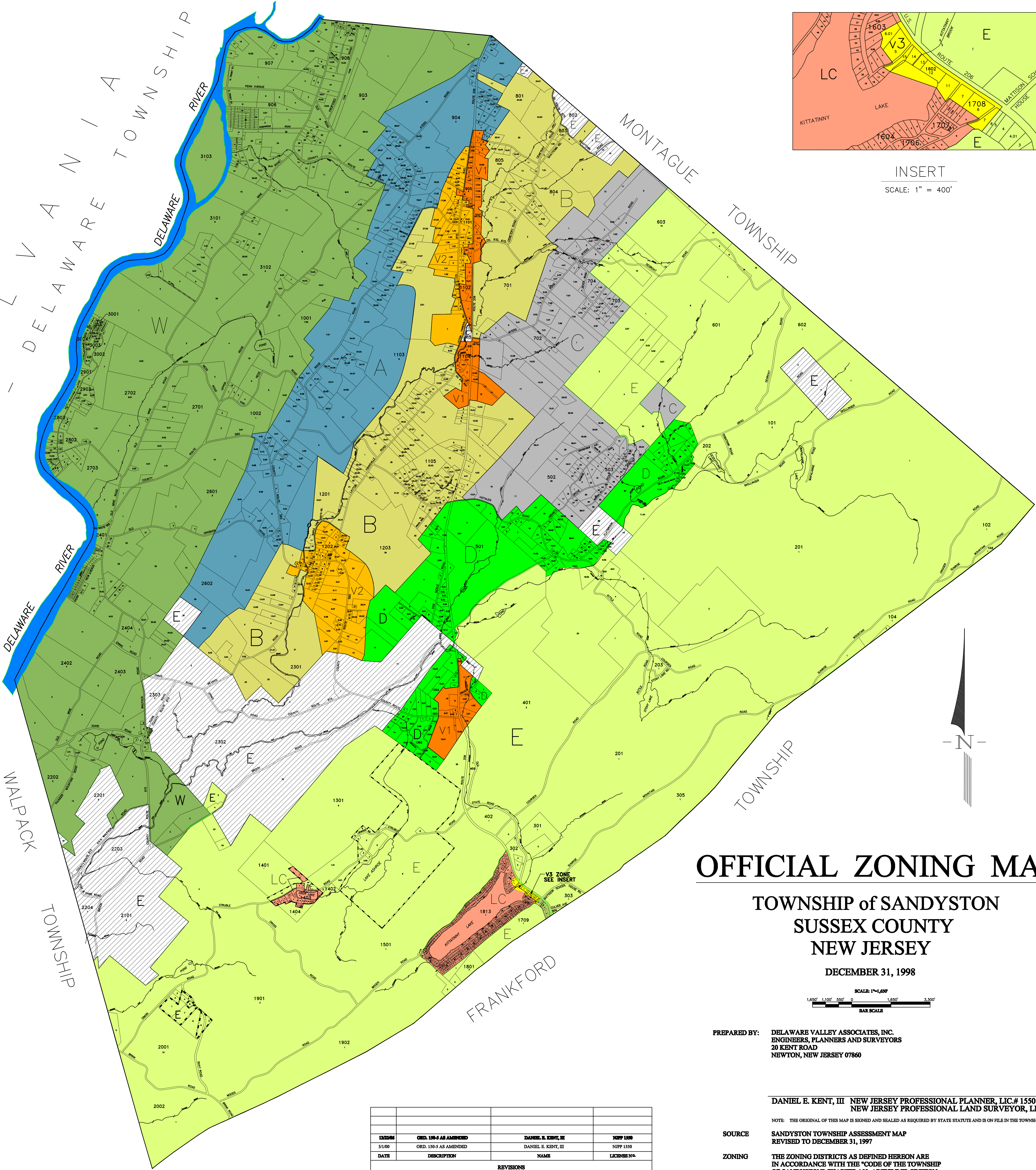
SCALE: 1" = 800'



INSERT

SCALE: 1" = 400'

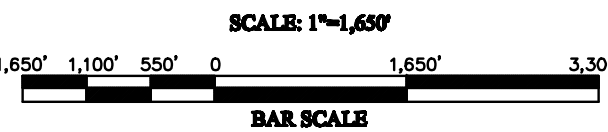
ZONE	DISTRICT
RESIDENTIAL ZONES	
A	WALPACK RIDGE RESIDENTIAL - AGRICULTURAL
B	VALLEY RESIDENTIAL - AGRICULTURAL
C	MOUNTAIN RESIDENTIAL - AGRICULTURAL
D	MEDIUM MOUNTAIN - RESIDENTIAL
LC	LAKE COMMUNITY
VILLAGE ZONES	
V1	HIGHWAY VILLAGE
V2	NEIGHBORHOOD VILLAGE
V3	LAKE VILLAGE
CONSERVATION ZONES	
E	CONSERVATION E; STOKES STATE FOREST
W	CONSERVATION W; D.W.G.N.R.A.
E	N.J. DIV. OF FISH GAME & WILDLIFE
E	PRIVATE LANDS



OFFICIAL ZONING MAP

TOWNSHIP of SANDYSTON
SUSSEX COUNTY
NEW JERSEY

DECEMBER 31, 1998



PREPARED BY: DELAWARE VALLEY ASSOCIATES, INC.
ENGINEERS, PLANNERS AND SURVEYORS
20 KENT ROAD
NEWTON, NEW JERSEY 07860

DANIEL E. KENT, III NEW JERSEY PROFESSIONAL PLANNER, LIC.# 1550
NEW JERSEY PROFESSIONAL LAND SURVEYOR, LIC.#14818

NOTE: THE ORIGINAL OF THIS MAP IS SIGNED AND SEALED AS REQUIRED BY STATE STATUTE AND IS ON FILE IN THE TOWNSHIP CLERK'S OFFICE.

SOURCE SANDYSTON TOWNSHIP ASSESSMENT MAP
REVISED TO DECEMBER 31, 1997

ZONING THE ZONING DISTRICTS AS DEFINED HEREBY ARE
IN ACCORDANCE WITH THE "CODE OF THE TOWNSHIP
OF SANDYSTON" CHAPTER 150, ARTICLE III, SECTION
150-5., AS AMENDED AND CURRENT TO DECEMBER 31, 1997.

DATE	DESCRIPTION	NAME	LICENSE NO.
12/29/98	ORD. 150-5 AS AMENDED	DANIEL E. KENT, III	NJPP 1550
3/1/00	ORD. 150-5 AS AMENDED	DANIEL E. KENT, III	NJPP 1550
REVISIONS			